

With today's demand for longer cycle life coupled with a higher spring force, QA is pleased to announce a new "**H**" Spring for our long stroke, .400 [3.17] Conventional and X Probe Socketless Series. Long stroke probes are designed to be used in mixed height or dual level, loaded board testing.

The new 7.0 oz [198 gm] H springs give as much as 29x longevity over our U spring with the same .350 [8.89] full stroke and compliment our current spring offerings. The H spring can be combined with any standard point style and tube material offered in their applicable product series.

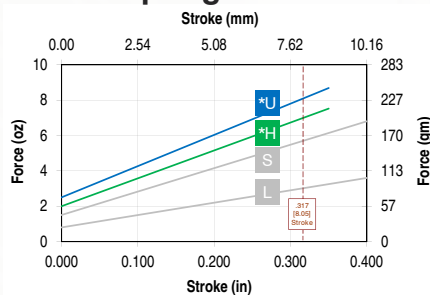
In addition to this new spring, we are renaming the "X" spring force designation to an "S" in all .400 [3.17] stroke probe series, including our 050-T40, 039-40, X39-40 and X31-40 series. The springs are exactly the same, this will be a part number change only.

100mil or X75 Series

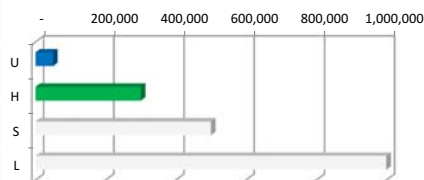
100-PR 40   -S
X75-PRP40   -S

Letter	Preload	@ .317 [8.05] Stroke	Material	Cycle Life @ working stroke
L	0.8 [23]	3.0 [85]	MW	1M min
S	1.5 [43]	5.7 [162]	SS	500K min
*H	2.0 [57]	7.0 [198]	SS	300K min
*U	2.5 [71]	8.1 [230]	MW	50K min

Spring Force



Cycle Life

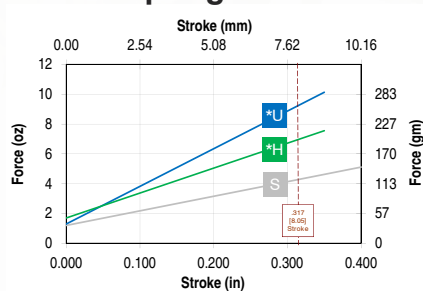


75mil or X50 Series

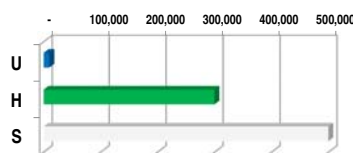
075-PR 40   -S
X50-PRP40   -S

Letter	Preload	@ .317 [8.05] Stroke	Material	Cycle Life @ working stroke
S	1.2 [34]	4.3 [122]	SS	500K min
*H	1.7 [48]	7.0 [198]	SS	300K min
*U	1.3 [37]	9.3 [264]	MW	10K min

Spring Force



Cycle Life

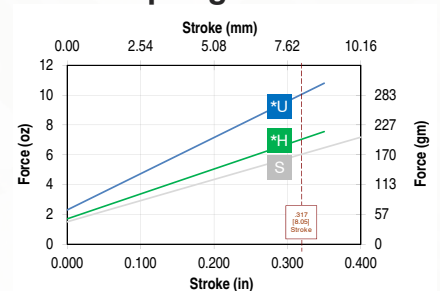


50mil Series

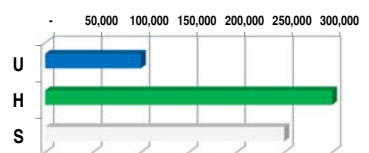
050-PRP40   -S

Letter	Preload	@ .317 [8.05] Stroke	Material	Cycle Life @ working stroke
S	1.5 [43]	6.0 [170]	SS	250K min
*H	1.7 [48]	7.0 [198]	SS	300K min
*U	2.3 [65]	9.0 [255]	SS	100K min

Spring Force



Cycle Life



* H & U springs are rated @ .350 [8.89] max full stroke.
All dimensions are in inches [mm]. All spring forces are in ounces [gms].