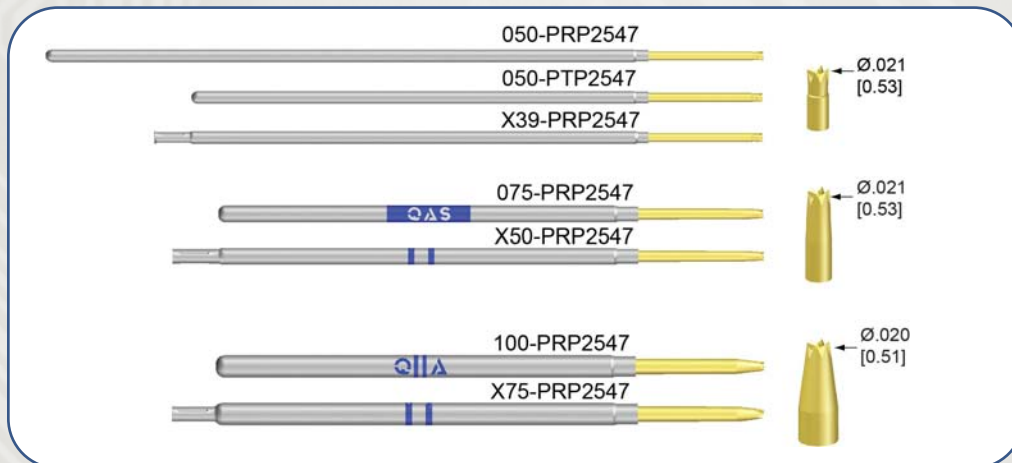


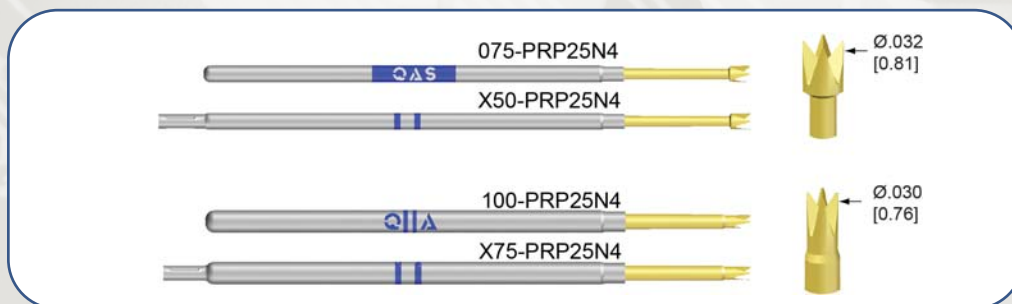
QA Technology is always striving to offer you the best tip selection to ensure reliable contact for all intended target types. As technology advances in board manufacturing and contact issues arise, we work closely with our customers to solve these issues by designing specific tip styles to meet their challenges.

We are pleased to add a **“47-S” Headless Steel Torch** and **“N4-S” Headless Steel Crown** tip styles in a variety of conventional and X Probe® Socketless Series products.

The **47-S Torch** is an aggressive steel, self-cleaning tip style for contacting: leads, posts, and solder domes. A constant tip diameter for all product series allows for more consistent probing on various center-to-center spacing.



The **N4-S Crown** reduced headless steel tip style is designed for contacting small leads and solder domes. Its valleys are self-cleaning for no-clean processes and applications where contaminants are present.



For samples or pricing, please contact us at (603) 926-0348 or email sales@gatech.com

All dimensions are in inches [mm]. All spring forces are in ounces [gms].